



## Samurai Analytics

“Samurai moves the market forward, detecting events in real time.”

### 80+ Object Library

Person

Bags

Animals

Bicycles

Motorcycles

Trucks

Wheelchairs

Strollers/Prams

Shopping Carts

Vehicles

### Re-ID \*New

Advanced likeness detection allows Samurai to follow a person of interest throughout your location, **across multiple cameras**.

### Contact Us!

Email  
[sales@artoflogic.ai](mailto:sales@artoflogic.ai)

Website  
<https://www.artoflogic.ai>

Phone  
1300 300 123

Address  
Innovation House | Suite 35,  
50 Mawson Lakes Blvd,  
Mawson Lakes  
SA 5095

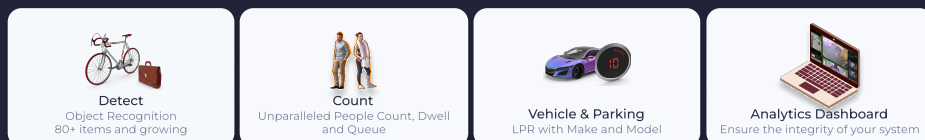


## Transforming Surveillance into Strategic Intelligence



**Shogun** redefines how organizations interact with surveillance data. More than a traditional analytics platform, Shogun transforms real-time video feeds into strategic, privacy-conscious intelligence. With a unified dashboard and **AI-powered insights**, Shogun enables better decisions, faster responses, and smarter operations.

### Dashboard Features



#### Object Detection:



- **Detect:** Identifies and tracks objects within defined regions of interest.
- **Re-ID (Re-Identification):** Follows a single object across multiple cameras, improving surveillance accuracy.

#### Counting:



- **Line Crossing Count:** Tracks items or individuals crossing defined lines.
- **Region of Interest Count:** Monitors and counts within determined areas, such as entry points or specific zones.

#### Automatic License Plate Recognition - ALPR



- **ALPR Infringement:** Tracks and reports infringing vehicles.
- **ALPR Blacklist:** Identifies vehicles via predetermined list.
- **ALPR Occupancy:** Monitors vehicle occupancy in specific areas.
- **ALPR Alerting:** Notifies users of critical events based on defined criteria.

#### Dwell-Time Functionality:



- Tracks time-based data for occupancy and traffic flow within specific periods.

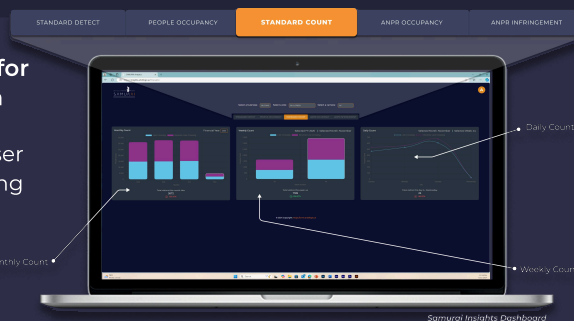
#### Analytics Dashboard:



- **Data Twin:** Presents real-time and historical data for all monitored elements in a single view.

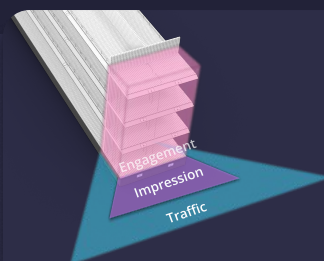
### Centralize all your data for powerful insights—all in one screen

Each module is built for user control and clarity—allowing you to drill down into the data that matters most, in real time.



### Industries Applicable

Shogun is built for real-world environments helping cities, retailers, mining sites, and infrastructure make smarter decisions. **From tracking customer flow in retail to monitoring restricted zones in mining or analyzing crowds in public spaces**, Shogun delivers the insights needed to boost safety, efficiency, and performance.



End Cap and Traffic Monitoring Zones