



# Discover **Re-ID**: Shogun's Breakthrough Technology

Welcome to the **Samurai Suite**—where advanced analytics meets system health monitoring in one powerful platform. We're proud to introduce **Re-ID**, Shogun's groundbreaking feature that's transforming how subjects are tracked across spaces.

Samurai Analytics



# SHOGUN

01 (66%)

## Smarter Monitoring. Real-Time Insight. Complete Control.



# WHAT IS RE-ID?

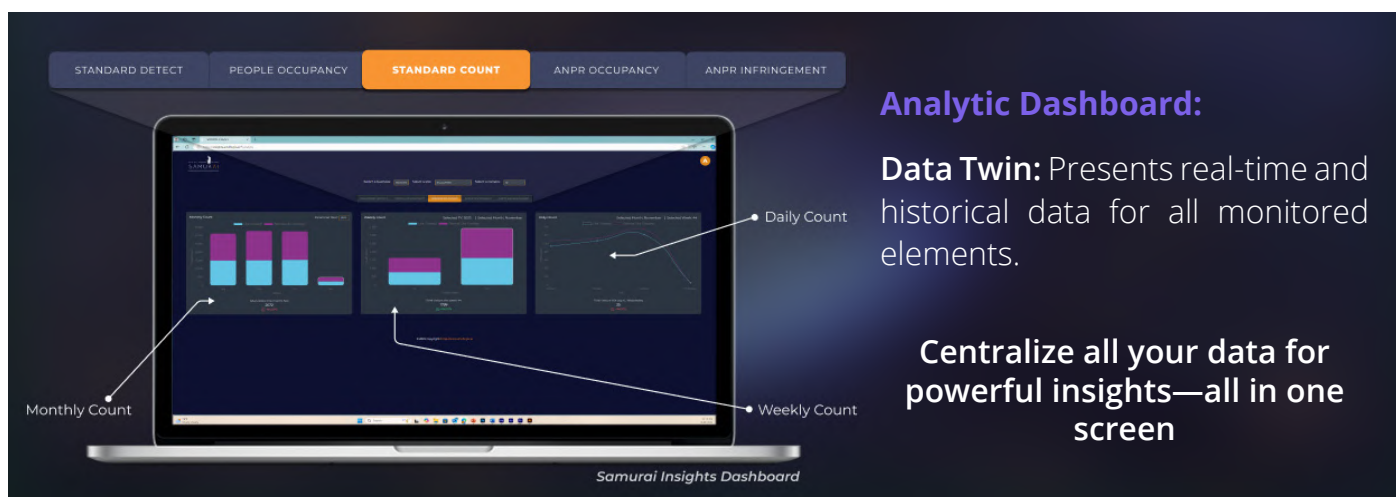
Re-ID is the latest feature added to **Shogun**, the powerful analytics engine within the Samurai Suite. Built to deepen behavioral understanding while preserving individual privacy, **Re-ID allows anonymous tracking of individuals across multiple cameras**—without the use of facial recognition.

This cutting-edge capability empowers organizations to:

- Follow a person's journey across multiple cameras
- Accurately calculate dwell time within specific areas
- Prevent double counting across views
- Separate staff activity from customer analytics
- Trigger real-time alerts based on roles and movement behavior.



**Re-ID marks a major leap forward in Shogun's ability to deliver real-time, actionable insights, making it an essential tool for environments where understanding flow, behavior, and space utilization is critical.**



## Analytic Dashboard:

**Data Twin:** Presents real-time and historical data for all monitored elements.

**Centralize all your data for powerful insights—all in one screen**

**Dwell-Time Functionality:** Tracks time-based data for occupancy and traffic flow within specific periods, aiding in city traffic management and optimizing public space utilization.

**Unified Interface:** All functionalities are accessible from one screen, simplifying operations and reducing the learning curve.

**Data Twin Capability:** Provides a holistic view of real-time data, enhancing situational awareness and decision-making in industrial environments.

## Privacy-First Technology

Re-ID is non-biometric, fully anonymous, and designed to meet modern privacy regulations. It uses visual cues like **Shape, Size, and Colour**—not facial recognition—to assign anonymous IDs, making it safe for sensitive environments like retail, public spaces, and councils.



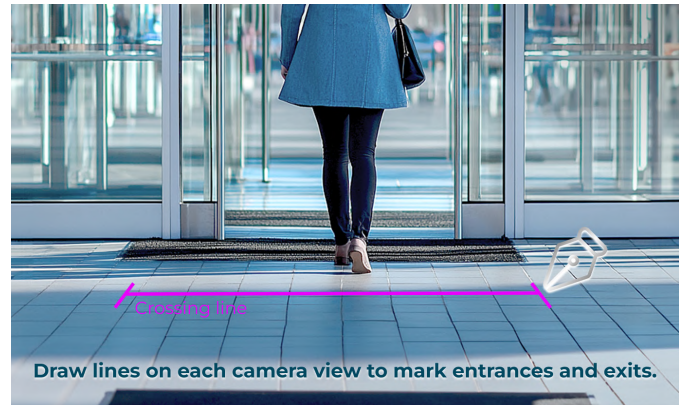
Samurai Suite: Real-Time Safety Intelligence

# HOW RE-ID WORKS IN SHOGUN?

Re-ID in Shogun is designed to be intuitive, powerful, and easy to implement. Here's how the system works behind the scenes to deliver anonymous behavioral intelligence:

## 1 Define Entry/Exit Points (Lines)

Users start by drawing lines on each camera view to mark entrances and exits. These lines are directional—marked as “In” or “Out”—to signal the start and end of an individual's journey.



## 2 Map the Environment (Polygons)

Next, users draw polygons to define zones of interest. Each polygon is assigned one of three types:

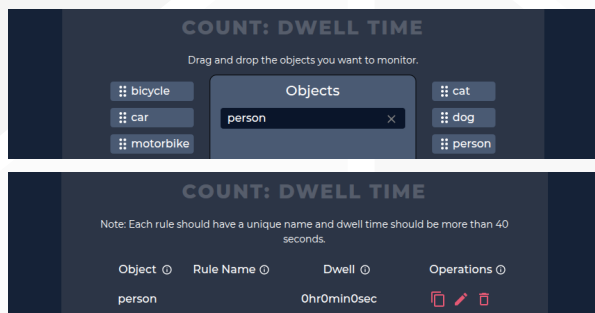
- **Regular:** For general detection and alerts
- **Journey Map:** For tracking movement and dwell time
- **Staff:** To help the system identify employee behavior and filter it out of analytics



## 3 Assign Roles Automatically

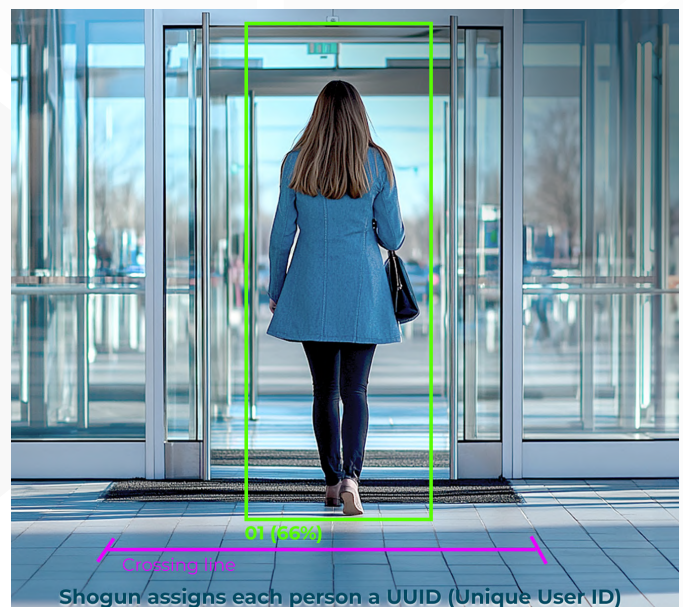
When someone enters a **staff-designated polygon** and remains for a set dwell time, Shogun automatically labels them as **Staff**.

This ensures that staff movements are **excluded from customer journey data** and alerts can be filtered accordingly.



## 4 Track Individuals Anonymously

Using AI and **pattern recognition (e.g. Shape, size, Colour)**, Shogun assigns each person a **UUID (Unique User ID)** as soon as they are detected.

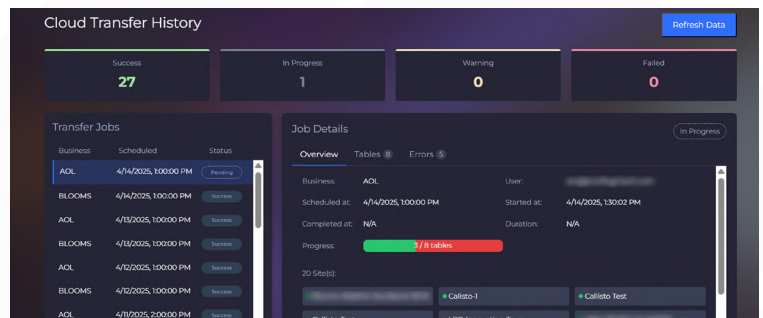




## 5 Collect and Sync Journey Data

All journey events—**entry, zone visits, exits, dwell times**—are stored locally and then synced to the cloud every 15 minutes. Each record includes:

- **Entry/Exit line data** (with timestamps)
- **Zone-by-zone** visit data
- **Role information** (staff/non-staff)

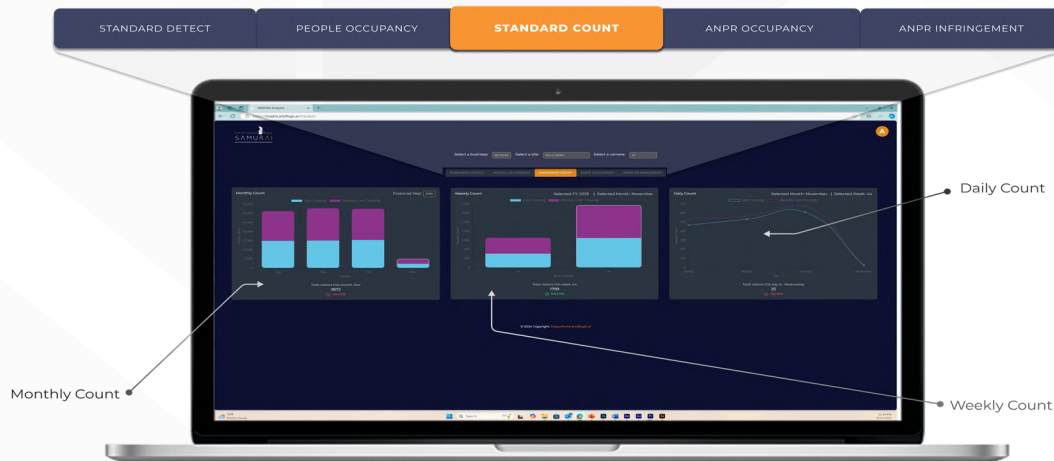


*All data is securely structured for powerful analytics and visualization*

## 6 Visualize in the Dashboard

Finally, users access the Shogun analytics portal, where they can:

- View heatmaps and zone activity
- Analyze common paths and dwell times
- Filter data by time, zone, or role
- Identify return visits or abnormal behavior



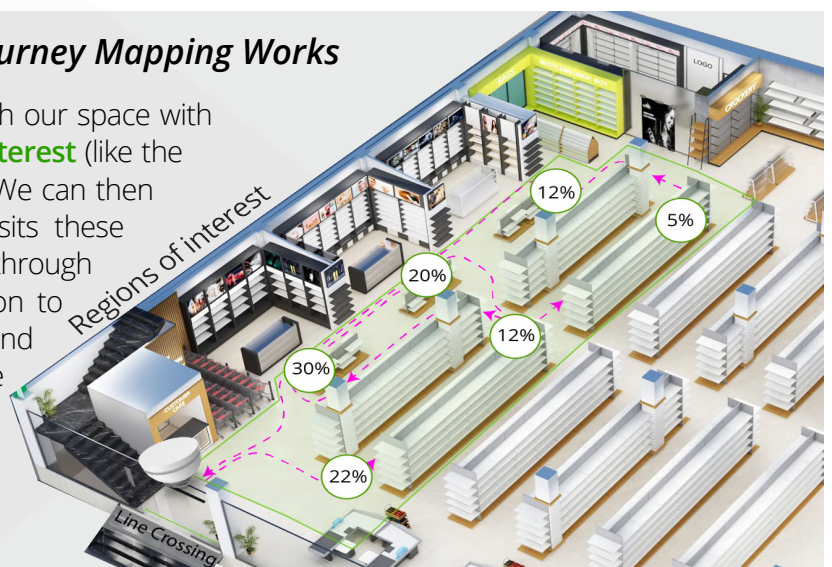
**From insight to action—all in one dashboard**

All data is synced and visualized in the Shogun portal:

- Foot traffic
- Journey heatmaps
- Dwell analysis
- Alert history
- Return visits and more

### How Journey Mapping Works

To map a unique individual's journey through our space with REID, we would first designate **regions of interest** (like the endcaps in our retail example to the right). We can then track the order in which our customer visits these regions, **generating a path** they have taken through our store. We can then use this information to optimize store layouts, provide marketing and sales data in **key points**, and relate these journeys to external data points (like POS) to understand more about how this journey effects behavior.



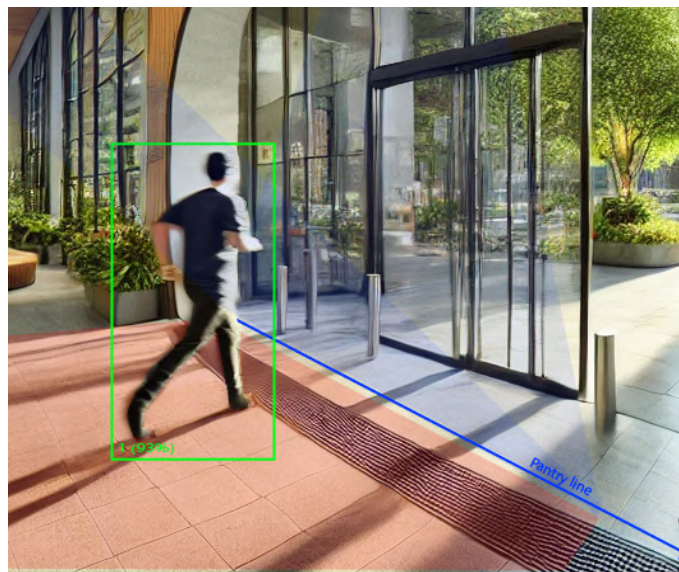
# DESIGNED FOR EVERY ENVIRONMENT

Re-ID in Shogun adapts to the unique needs of diverse industries—enhancing visibility, safety, and operational efficiency.

## Industrial & Mining Operations

Strengthen security, safety, and compliance in complex environments.

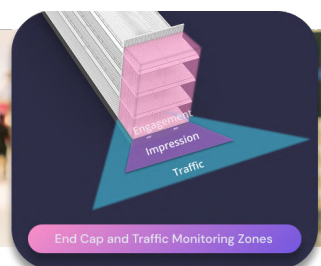
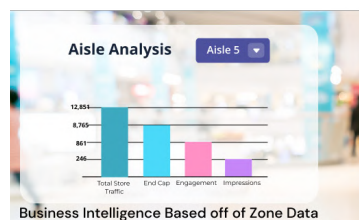
- **Track movement in restricted or hazardous zones** and ensure only authorized personnel enter sensitive areas.
- **Monitor contractor time-on-site** and validate time spent in work zones for accountability and reporting.
- **Receive real-time alerts** minimizing downtime and keeping you in control.



## Retail & Commercial Spaces

Turn foot traffic into business intelligence.

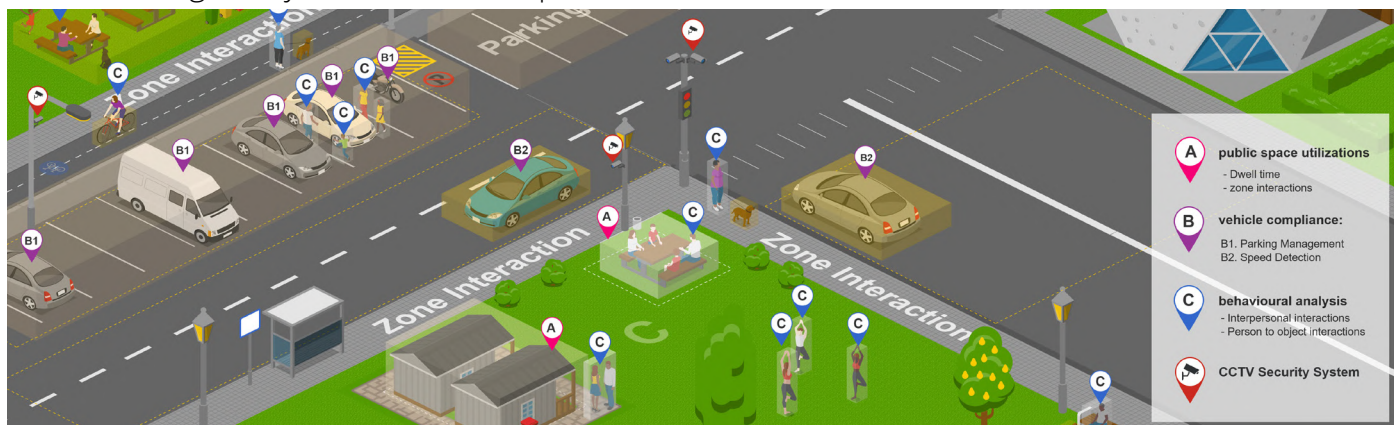
- **Track how customers move** through your store—from entrance to checkout—to understand engagement with products, displays, and service areas
- **Optimize product placement and layout** based on dwell time and zone popularity to increase conversion and customer satisfaction.
- **Automatically exclude staff** from analytics to ensure your traffic data reflects true customer behavior and avoid skewed reporting.



## Smart Cities & Councils

Enhance safety and resource planning in public spaces.

- **Monitor foot traffic** in key areas such as parks, libraries, civic buildings, or transit stations to inform operational decisions.
- **Use data to guide urban planning**, allocate resources more effectively, and identify underused or overcrowded zones.
- **Trigger smart alerts** when loitering, overcrowding, or unusual movement patterns occur, enhancing safety and incident response.





# INTRODUCING RE-ID IN SHOGUN

An Advanced Capability within the Samurai Suite for Deeper Customer Insight and Smarter

## Why Choose Art of Logic?

- Tailored Solutions for your specific needs
- AI-Driven Analytics for smarter operations
- Sustainable Energy for reliable, eco-friendly performance

Optimize logistics, reduce labor costs, and boost productivity.

**Art of Logic** provides advanced solutions to enhance safety, resource efficiency, and public space management in your space. Our real-time Detection Suite, featuring Automatic License Plate Recognition (ALPR), thermal cameras, and AI-driven analytics, enables precise monitoring of public areas, vehicles, and infrastructure, helping prevent incidents and streamline urban operations.

- **Real-Time Insights:** Immediate data on People, Objects, vehicles, and critical areas.
- **Focused Surveillance:** Region-of-interest technology for targeted monitoring and alerts.
- **Renewable Energy Poles:** Self-powered poles for continuous operation in remote areas.

With Art of Logic's technological innovations, urban authorities can elevate public safety, optimize the use of resources, and improve operational efficiency through AI-driven analytics and sustainable energy solutions. Our solutions are tailored to the unique needs of cities, providing reliable, scalable, and adaptable tools to enhance community welfare and ensure efficient urban management.

**OUR PARTNERS:** We work with world class partners.

**HAILO**

**BOSCH**

**maris**

**n<sup>x</sup> NetworkOptix**  
VIDEO. POWERED.

**corsight**

**VELASEA**

**AVerMedia**

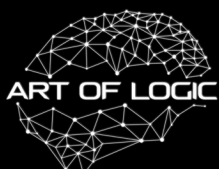
**DELL Technologies**

**PRO**

**ZANKAP**

**THRIVE**

**DYNACOLOR**  
always watching



#### ADDRESS

Adelaide, South Australia  
35 Innovation House | Suite  
5095 Mawson Lakes Blvd, Mawson Lakes SA 50

#### CONTACT

1300 300 123  
sales@artoflogic.ai



ART OF LOGIC  
**SAMURAI**