

Introducing Art of Logic's Europa Micro Server

PRODUCT CHARACTERISTICS

- NX Witness VMS
- Machine Learning
- Audio

TECHNICAL DATA SPECIFICATION

- iMX8M Plus processor
- Hailo-8ai accelerator
- 2 x USB Cam through M5 connector
- 2 x Microphone through M5 (into Audio codec)
- 4G through SMA
- GPS SMC
- 512GB EMMC
- 6GB LPDDR4 RAM
- Gbe through M8
- 4 x GPIO
- Accelerometer

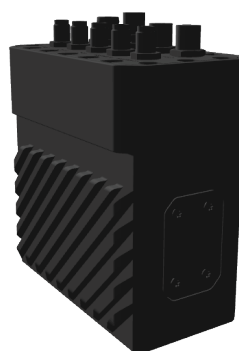


PRODUCT OVERVIEW

Art of Logic's Europa is intended for an expeditious implementation into any environment boasting 4/5G, 6GB RAM, iMX8M Plus with ARM Cortex A53 cores, Hailo-8 GPU and 512GB EMMC, GB Ethernet, 2 Audio channel, 2 Video inputs (however more through Ethernet), GPS and accelerometer, GPIO. This device is designed to carry NX VMS and utilise the Hailo-8 GPU for machine learning/AI on all inputs and at an external size of 70x70x50mm and a power utilisation of under 10W, this is a masterpiece of technology.

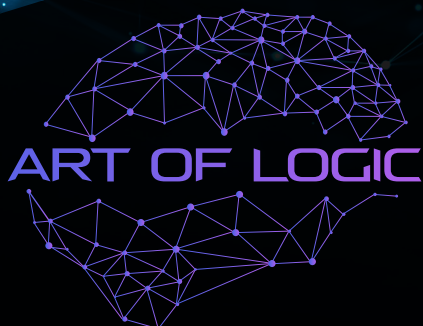
PRODUCT FEATURES

- High-definition video on the edge
- Integrated with Nx Witness VMS
- 4 channels of Object Detection



APPLICABLE INDUSTRIES

Superior energy efficiency, and miniaturized form factor that is suitable for a wide range of platforms and applications, particularly for edge based surveillance for Local Council and Autonomous Vehicles.



Product Data Spec Sheet Europa Micro Server

EXTERNAL INTERFACE:

- Dual USB 2.0 for USB camera – dual Binder M5 connectors
- GbE – Binder M8 connector
- Dual Microphone – Binder M5 connector
- Dual 4G Cellular Antenna – SMA connectors
- Single GPS Antenna – SMC connector
- 4 x GPIOs – Binder M5 connector
- 12V Power Input – Binder M5 connector

INTERNAL INTERFACE:

- PCIe to Hailo-8
- USB to 4G Cellular Modem
- SDIO to EMMC
- I2S to Audio Codec (microphone input will pass through MAX9814 amplifier)

FEATURES

- Dual USB Camera capture
- Dual Microphone capture
- USB Camera raw video transfer to Hailo-8
- Dual USB Camera h.265 encoding
- Dual Transport Stream (TS) generation (video and audio blocks)
- Dual TS low-latency streaming (UDP, RTP, RTSP in Unicast, Multicast, Broadcast)
- Dual TS recording on EMMC
- Files download via GbE and USB (when connected to PC instead of a camera and recognized as mass storage device)
- GPIOs control
- Control using Web-Browser and SW API via GbE

MECHANICAL

- IP67 housing
- Binder connectors as listed above
- SMA connectors for LTE antennas
- SMC connector for GPS
- All connectors to be mounted on the short side of the device
- Maximum short side width of 75mm
- Anodised black aluminium housing for passive cooling of processors and modem
- SIM accessible by opening the case